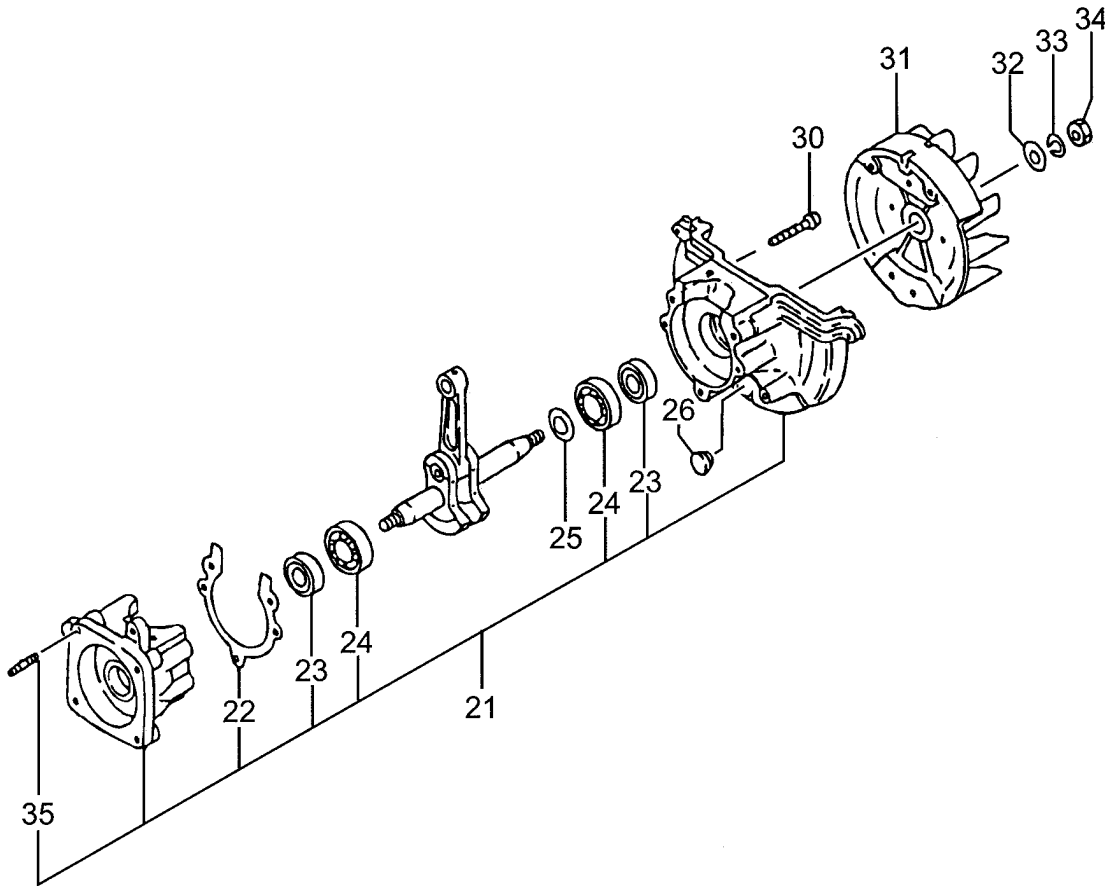
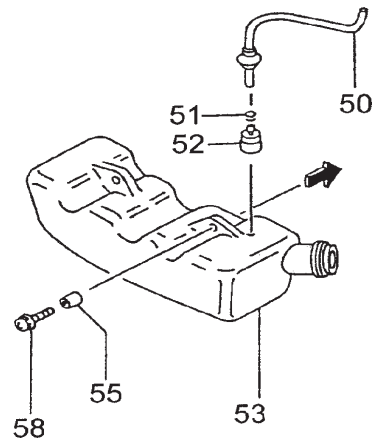
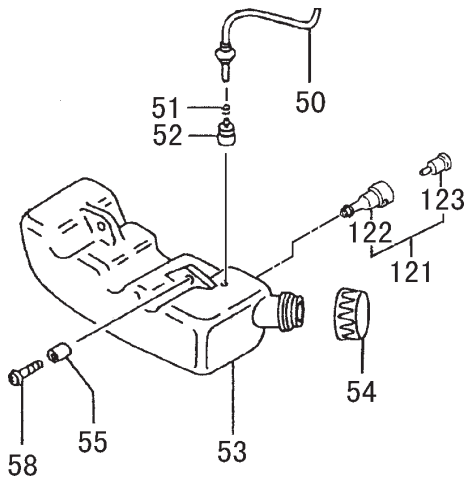
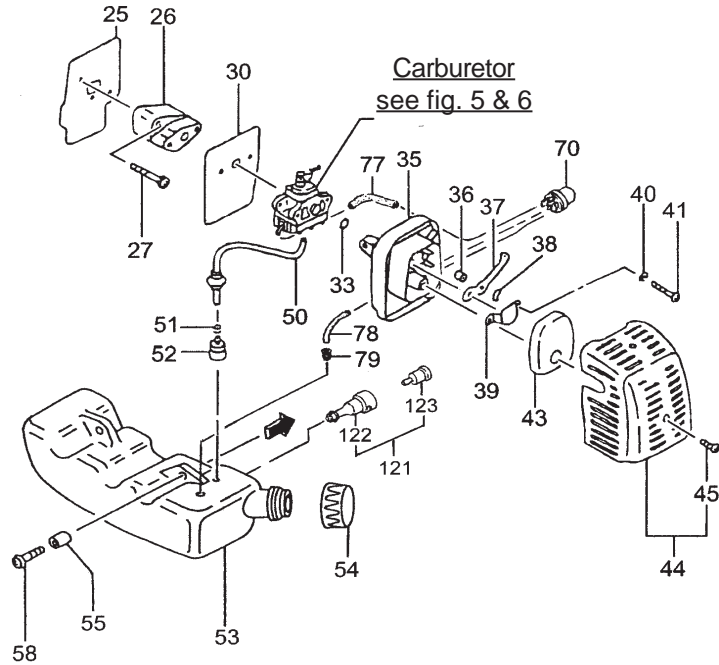


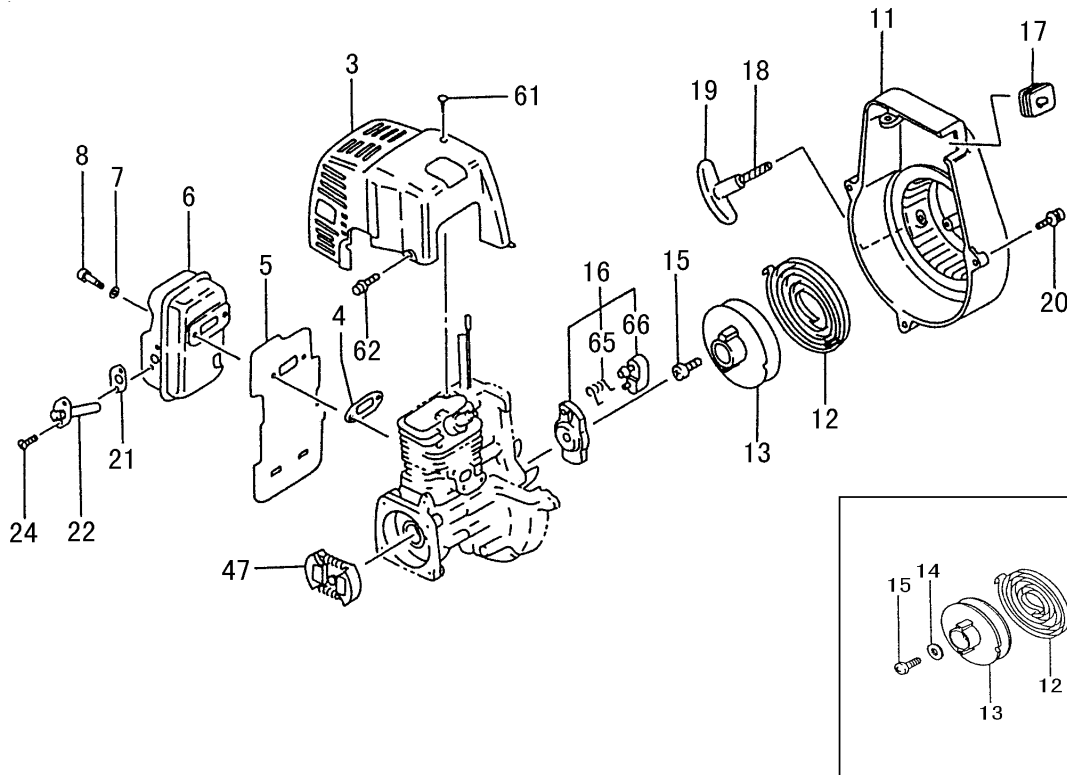
| ITEM | PART NUMBER | DESCRIPTION | QTY | COMMENTS |
|------|-------------|----------------------|-----|-----------------------------|
| 1-1 | 1570650091 | CAP,SPARK PLUG ASS'Y | 1 | |
| 1-2 | 0181166021 | PLUG,SPARK | 1 | |
| 1-3 | 0010650090 | SET,CYLINDER | 1 | Includes cylinder gasket |
| 1-4 | 99416050201 | SCREW,5X20/WS | 2 | |
| 1-7 | 0170650020 | GASKET,CYLINDER | 1 | |
| 1-8 | 04100601210 | RING,PISTON | 1 | |
| 1-9 | 0300650090 | PISTON | 1 | Includes rings and circlips |
| 1-10 | 03706500200 | PIN,PISTON | 1 | |
| 1-11 | 03901620200 | CIRCLIP,PISTON PIN | 2 | |
| 1-12 | 04606500801 | CRANKSHAFT | 1 | |
| 1-13 | 99962081225 | BEARING,NEEDLE,F-810 | 1 | |
| 1-27 | 1532153390 | COIL,IGNITION | 1 | |
| 1-28 | 99416040226 | SCREW,WS,4X22 | 2 | |
| 1-36 | 25006500200 | TUBE,INSULATOR | 1 | |
| 1-37 | 1780650080 | CORD,STOP COMPLETE | 1 | R107152~ |



| ITEM | PART NUMBER | DESCRIPTION | QTY | COMMENTS |
|------|-------------|--------------------|-----|----------|
| 2-21 | 0720650090 | CRANKCASE ASS'Y | 1 | |
| 2-22 | 09006500200 | GASKET,CRANKCASE | 1 | |
| 2-23 | 99966122206 | SEAL,OIL,#TC12227 | 2 | |
| 2-24 | 99961600100 | BEARING,BALL,#6001 | 2 | |
| 2-25 | 33000200210 | SHIM,12.2X19X.10 | 1 | |
| 2-25 | 33000200220 | SHIM,12.2X19X.15 | 1 | |
| 2-25 | 33000200230 | SHIM,12.2X19X.20 | 1 | |
| 2-25 | 33000200240 | SHIM,12.2X19X.30 | 1 | |
| 2-26 | 59900601200 | CUSHION | 1 | |
| 2-30 | 99414050301 | SCREW,5X30/S | 3 | |
| 2-31 | 1552152380 | ROTOR,MAGNETO | 1 | |
| 2-32 | 99201080011 | WASHER,8 | 1 | |
| 2-33 | 99210080012 | WASHER,S,8 | 1 | |
| 2-34 | 99101080011 | NUT,8 | 1 | |
| 2-35 | 10002100200 | BOLT,STUD,6X22 | 2 | |

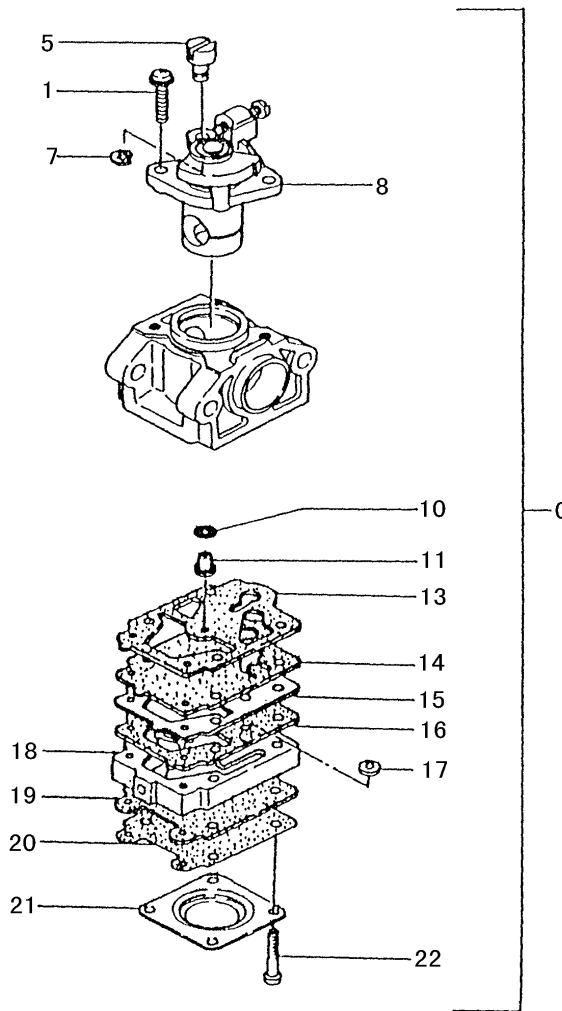


| ITEM | PART NUMBER | DESCRIPTION | QTY | COMMENTS |
|-------|-------------|-------------------------|-----|---|
| 3-25 | 40306500200 | GASKET,INTAKE | 1 | Includes gasket |
| 3-26 | 4040650090 | SET,CARB INSULATOR | 1 | |
| 3-27 | 99416050252 | SCREW,5X25WS | 2 | |
| 3-30 | 40206500200 | GASKET,CARBURETOR | 1 | |
| 3-33 | 99967015000 | O-RING,P15 | 1 | |
| 3-35 | 4230650081 | BODY,CLEANER | 1 | |
| 3-36 | 47006500200 | COLLAR | 2 | ~R233951 R233952~ |
| 3-37 | 52806500200 | LEVER,CHOKE | 1 | |
| 3-37 | 5280650T20 | LEVER,CHOKE | 1 | |
| 3-38 | 99204080030 | WASHER,8 | 1 | |
| 3-39 | 47601700200 | BOARD,BLOW OVER CHECK | 1 | |
| 3-40 | 99210050012 | WASHER,S,5 | 2 | |
| 3-41 | 99011050602 | SCREW,5X60 | 2 | ~R107151 R107152~ |
| 3-43 | 4460650020 | ELEMENT,CLEANER | 1 | |
| 3-44 | 4520650091 | COVER,CLEANER,W/BOLT | 1 | |
| 3-45 | 3800637C200 | BOLT,CLEANER COVER | 1 | |
| 3-50 | 70053005130 | PIPE,FUEL | 1 | |
| 3-50 | 2230650090 | PIPE,FUEL,ASS'Y | 1 | |
| 3-51 | 68000731201 | CLIP 6.3 | 1 | ~T218560 One hole ~U217438 Two hole U217439~ Three hole ~T218560 |
| 3-52 | 6750404280 | FILTER,FUEL | 1 | |
| 3-53 | 5910650000 | TANK,FUEL | 1 | |
| 3-53 | 5910661321 | TANK,FUEL | 1 | |
| 3-53 | 5910651A21 | TANK,FUEL | 1 | |
| 3-54 | 5950650A90 | CAP,TANK | 1 | |
| 3-54 | 5950656B90 | CAP,FUEL BLACK,NON VENT | 1 | T218561~ |
| 3-55 | 65900801200 | COLLAR | 2 | U217439~ U217439~ U217439~ U217439~ U217439~ U217439~ |
| 3-58 | 99463050185 | BOLT,HEX 5X18PS | 2 | |
| 3-70 | 44225143800 | PUMP,PRIMING ASS'Y | 1 | |
| 3-77 | 7000250408 | PIPE,FUEL,2.5x4x80 | 1 | |
| 3-78 | 7000250406 | PIPE,FUEL,2.5X4X65 | 1 | |
| 3-79 | 53432710200 | GROMMET,FUEL PIPE | 1 | |
| 3-121 | 5640661190 | VENT,AIR ASS'Y | 1 | U217439~ U217439~ U217439~ |
| 3-122 | 5650441020 | PIPE,AIR VENT | 1 | |
| 3-123 | 6460661290 | VALVE | 1 | |

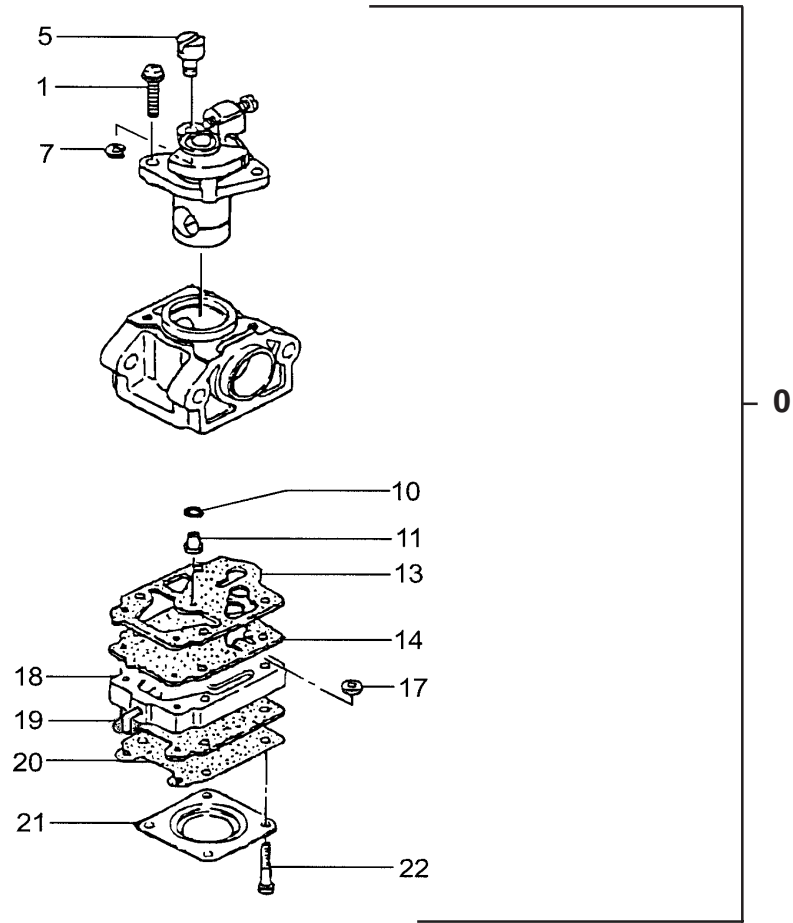


Recoil Starter Assy
Use #762.06500.90
Includes items #11-#19

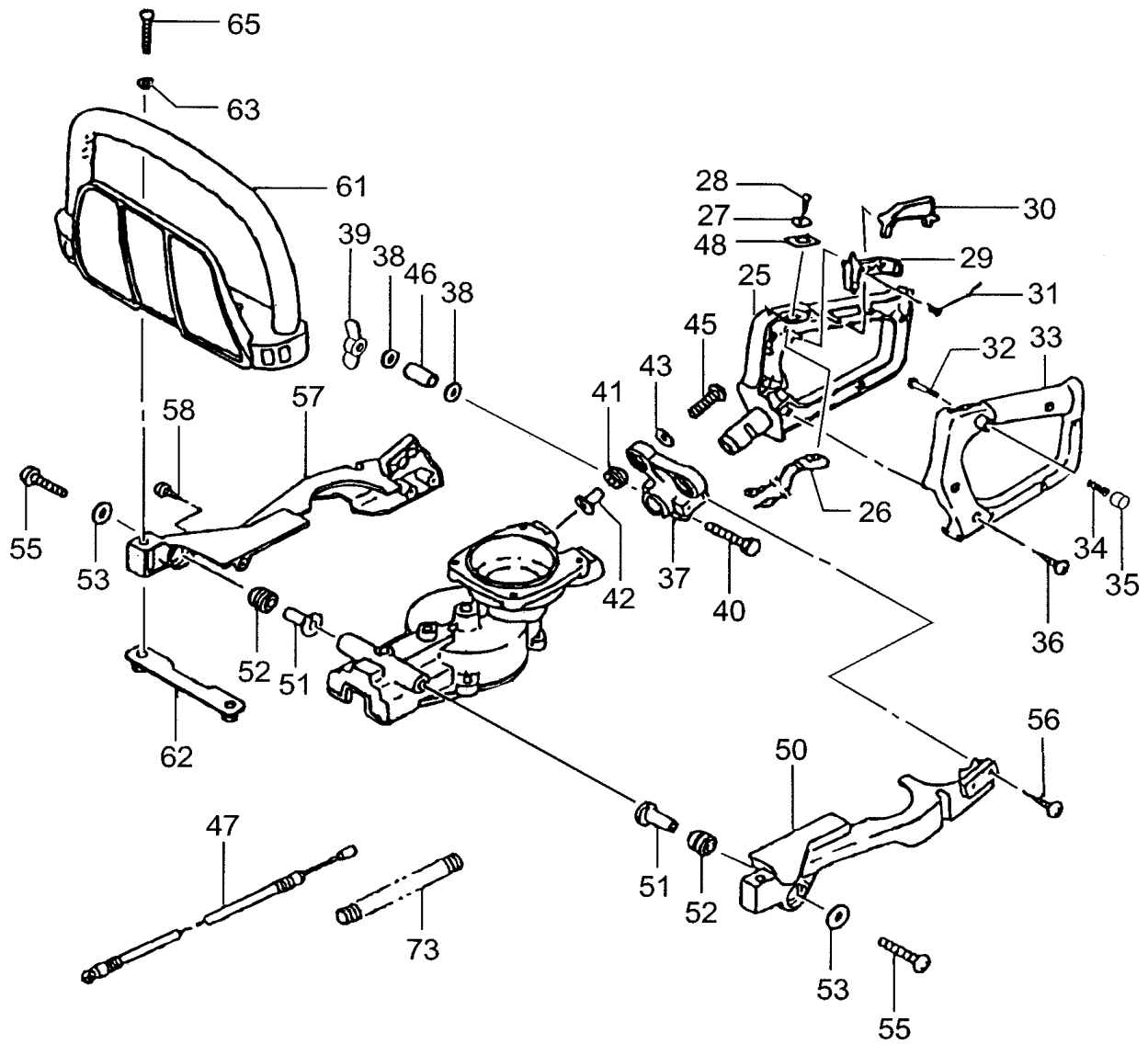
| ITEM | PART NUMBER | DESCRIPTION | QTY | COMMENTS |
|------|-------------|----------------------|-----|----------|
| 4-3 | 7380650020 | PROTECTOR,MUFFLER | 1 | |
| 4-4 | 73706500200 | GASKET,MUFFLER | 1 | |
| 4-5 | 13306500200 | SHIELD,HEAT | 1 | |
| 4-6 | 70606500800 | MUFFLER | 1 | |
| 4-7 | 99201050011 | WASHER,5 | 2 | |
| 4-8 | 99051050503 | BOLT,HEX,5X50 | 2 | |
| 4-11 | 1120650080 | CASE,FAN | 1 | |
| 4-12 | 78006097200 | SPRING,RECOIL | 1 | |
| 4-13 | 77406097200 | PULLEY,STARTER | 1 | |
| 4-14 | 80106091200 | WASHER,ROPE REEL | 1 | ~Q005150 |
| 4-15 | 8390201020 | SCREW,SET | 1 | |
| 4-16 | 79806500900 | PULLEY,STARTER,ASS'Y | 1 | |
| 4-17 | 2030604A202 | GROMMET | 1 | |
| 4-18 | 78306097200 | ROPE,STARTER | 1 | |
| 4-19 | 78506410200 | HANDLE,STARTER | 1 | |
| 4-20 | 99415040162 | SCREW,PS,4X16 | 3 | |
| 4-21 | 75106500200 | GASKET,MUFFLER | 1 | |
| 4-22 | 7210650090 | PIPE,TAIL | 1 | |
| 4-24 | 99434040081 | SCREW,4X8/S | 2 | |
| 4-47 | 2770634F900 | CLUTCH,ASS'Y | 1 | |
| 4-61 | 99072045164 | SCREW,TAPPING,4.5X16 | 1 | |
| 4-62 | 99425040128 | BOLT,PS,4X12 | 2 | |
| 4-65 | 79006097200 | SPRING,STARTER PAWL | 1 | |
| 4-66 | 7880650020 | PAWL,STARTER | 1 | |



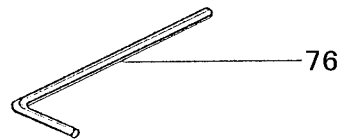
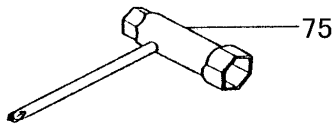
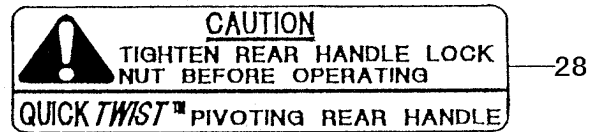
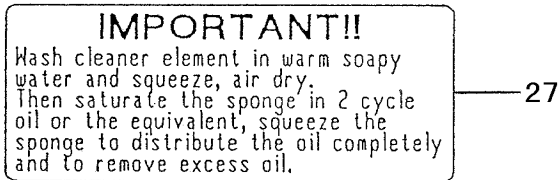
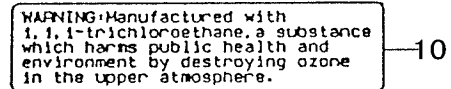
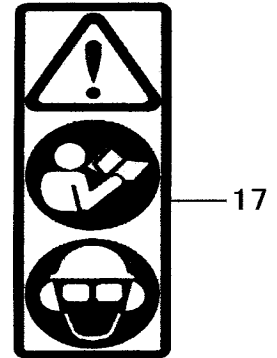
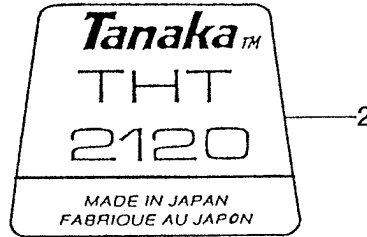
| ITEM | PART NUMBER | DESCRIPTION | QTY | COMMENTS |
|------|-------------|---------------------|-----|-------------------------------|
| 5-0 | 45525145900 | CARBURETOR, ASS'Y | 1 | ~R233951 |
| 5-1 | 54825140200 | SCREW, THROTTLE SET | 2 | |
| 5-5 | 53925120200 | SWIVEL | 1 | |
| 5-7 | 48925100200 | RING, STOP | 1 | |
| 5-8 | 48825145800 | VALVE, THROTTLE | 1 | |
| 5-10 | 55025100200 | O-RING | 1 | |
| 5-11 | 5992000W410 | JET, MAIN, #41 | 1 | |
| 5-13 | ~ ~ ~ | GASKET, PUMP | 1 | ~ Not available individually |
| 5-14 | ~ ~ ~ | DIAPHRAGM, PUMP | 1 | Order #650.25140.900 Carb Kit |
| 5-15 | 52325100201 | PLATE, PUMP | 1 | |
| 5-16 | 52225100200 | PLATE, CIRCUIT | 1 | |
| 5-17 | 57825007200 | SCREEN, INLET | 1 | |
| 5-18 | 57525140800 | BODY, PUMP | 1 | |
| 5-19 | ~ ~ ~ | GASKET, DIAPHRAGM | 1 | |
| 5-20 | ~ ~ ~ | DIAPHRAGM, METERING | 1 | |
| 5-21 | 47625004200 | COVER, DIAPHRAGM | 1 | |
| 5-22 | 54825101200 | SCREW, SET | 4 | |



| ITEM | PART NUMBER | DESCRIPTION | QTY | COMMENTS |
|------|--------------|------------------------|-----|-------------------------------|
| 6-0 | 455-06500-90 | CARBURETOR, ASSY | 1 | R233952~U217438 |
| 6-0 | 455-0651A-90 | CARBURETOR, ASSY | 1 | U217439~ |
| 6-1 | 54825140200 | SCREW, THROTTLE SET | 2 | |
| 6-5 | 53925120200 | SWIVEL | 1 | |
| 6-7 | 48925100200 | RING, STOP | 1 | |
| 6-10 | 55025100200 | O-RING | 1 | |
| 6-11 | 5992001W35 | JET, MAIN, #35 | 1 | ~U217438 |
| 6-11 | 599200BW34 | JET, MAIN, LONG, #34.5 | 1 | U217439~ |
| 6-13 | ~ ~ ~ | GASKET, PUMP | 1 | ~ Not available individually |
| 6-14 | ~ ~ ~ | DIAPHRAGM, PUMP | 1 | Order #650.25140.900 Carb Kit |
| 6-17 | 57825007200 | SCREEN, INLET | 1 | |
| 6-18 | 5752518280 | BODY, PUMP | 1 | ~U217438 |
| 6-18 | 5752514780 | BODY, PUMP ASS'Y | 1 | U217439~ |
| 6-19 | ~ ~ ~ | GASKET, DIAPHRAGM | 1 | |
| 6-19 | ~ ~ ~ | GASKET, DIAPHRAGM | 1 | |
| 6-20 | ~ ~ ~ | DIAPHRAGM, METERING | 1 | |
| 6-21 | 47625004200 | COVER, DIAPHRAGM | 1 | |
| 6-22 | 54825101200 | SCREW, SET | 4 | |



| ITEM | PART NUMBER | DESCRIPTION | QTY | COMMENTS |
|------|-------------|-----------------------|-----|----------|
| 8-25 | 05033160200 | HANDLE,A | 1 | |
| 8-26 | 17033160800 | SWITCH,STOP | 1 | |
| 8-27 | 2581165020 | BUTTON,STOP | 1 | |
| 8-28 | 99011030101 | SCREW,3X10 | 1 | |
| 8-29 | 23033160200 | LEVER,THROTTLE | 1 | |
| 8-30 | 23133160200 | LEVER,SAFETY | 1 | |
| 8-31 | 23233160200 | SPRING,THROTTLE LEVER | 1 | |
| 8-32 | 06432530200 | PIN,PUSH | 1 | ~R233951 |
| 8-33 | 05133160200 | HANDLE,B | 1 | |
| 8-34 | 06632300201 | SPRING,STOPPER | 1 | ~R233951 |
| 8-35 | 72532600202 | CAP,PUSH PIN | 1 | ~R233951 |
| 8-35 | 7653212020 | CAP | 1 | R233952~ |
| 8-36 | 99072045164 | SCREW,TAPPING,4.5X16 | 6 | |
| 8-37 | 05833160200 | BRACKET,HANDLE | 1 | |
| 8-38 | 99200060011 | WASHER,SMALL,6 | 2 | |
| 8-39 | 99161060012 | NUT,WING,6 | 1 | |
| 8-40 | 99021060551 | BOLT,6X55 HEX | 1 | ~Q005150 |
| 8-40 | 99021060501 | BOLT,6X50 | 1 | Q005151~ |
| 8-41 | 26632750200 | DAMPER,B | 2 | |
| 8-42 | 27632710201 | COLLAR,DAMPER B | 2 | |
| 8-43 | 36832057200 | WASHER,BRAKE SHAFT | 2 | |
| 8-45 | 99414050301 | SCREW,5X30/S | 2 | |
| 8-46 | 29433160200 | COLLAR | 1 | ~Q005150 |
| 8-46 | 2943316021 | COLLAR 16 | 1 | Q005151~ |
| 8-47 | 88506500800 | WIRE,THROTTLE | 1 | |
| 8-48 | 92533160200 | DECAL,STOP BUTTON | 1 | |
| 8-50 | 2493316020 | BODY,CLAMP A | 1 | |
| 8-51 | 27632710201 | COLLAR,DAMPER B | 2 | |
| 8-52 | 26632750200 | DAMPER,B | 2 | |
| 8-53 | 36832057200 | WASHER,BRAKE SHAFT | 2 | |
| 8-55 | 99414050301 | SCREW,5X30/S | 2 | |
| 8-56 | 99073045124 | SCREW,TAPPING,4.5X12 | 2 | |
| 8-57 | 2503316020 | BODY,CLAMP,B | 1 | |
| 8-58 | 99073045124 | SCREW,TAPPING,4.5X12 | 3 | |
| 8-61 | 2103316021 | HANDLE | 1 | |
| 8-62 | 0403316080 | SUPPORT,HANDLE | 1 | |
| 8-63 | 99201050011 | WASHER,5 | 2 | |
| 8-65 | 99414050401 | SCREW,5X40/S | 2 | |
| 8-73 | 16407007000 | TUBE,PROTECTION,7X700 | 1 | |



| ITEM | PART NUMBER | DESCRIPTION | QTY | COMMENTS |
|------|-------------|-------------------|-----|----------|
| 9-1 | 95037900200 | DECAL,PRO-FORCE A | 1 | |
| 9-2 | 9060650021 | DECAL,THT-2120 | 1 | |
| 9-5 | 95137900200 | DECAL,PRO-FORCE | 1 | |
| 9-8 | 91106500200 | DECAL,SRS | 1 | |
| 9-10 | 9200650A20 | DECAL,WARNING | 1 | ~R003554 |
| 9-17 | 9203246620 | DECAL,CAUTION | 1 | R003555~ |
| 9-27 | 9083316021 | DECAL,CAUTION | 1 | |
| 9-28 | 91933160200 | DECAL | 1 | |
| 9-75 | 03629331501 | SPANNER,COMBI | 1 | |
| 9-76 | 81320000200 | WRENCH,HEX,4 | 1 | |

Date: June 2001

Model & Serial: THT-2100/THT-2120/THT-2510/THT-2520/THT-2540/HTD-2522PF/HTD-2526PF/HTD-2530PF/HTS-2530PF.

All units produced after serial number W100101.

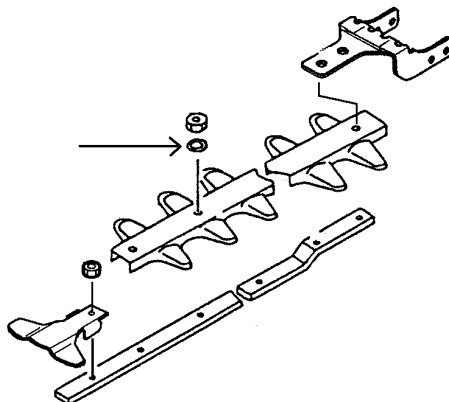
Reason: When these units are fitted with the aluminum safety shield, some experience loosening of the blade jam nuts. A flat washer has been added between the nut and the aluminum shield to help prevent the nut from becoming loose.

Models THT-2100, 2120, 2510 and HTD-2526PF, 2522PF require 3 washers.

Models THT-2520, 2540 and HTS-2530PF and HTD-2530PF require 2 washers

Part Number Changes:

| Old Part # | New Part # | Description | Remarks |
|---------------|------------|-------------|---------|
| 992-01060-011 | | Washer | |



Date: January, 2002

Model & Serial: All THT, HTD, HTS, TPH hedgetrimmer models.

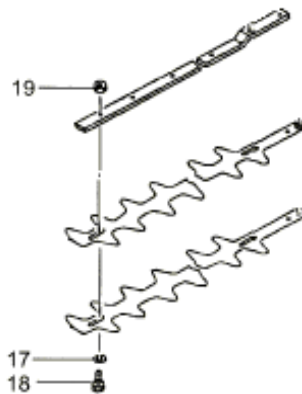
All units after serial number Y004401

Reason: All future production of hedgetrimmer models will utilize a blade-retaining nut that is of the locking variety. These nuts are oblong on one side to prevent loosening during use, but can be removed and re-installed without losing their locking ability.

When adjusting blade-fastening hardware, thread the bolt (18) through the blades and guide bar from the bottom, to a point where the flat washer (17), is still able to rotate, (usually to seat, and then backed off between ¼ and ½ revolution). Then install the lock nuts on the topside, tightening them while holding the bolt in place. Tighten all nuts, and then re-check for adjustment prior to operation. A lubricating agent, such as WD-40 should also be used to prevent sap build-up and premature wear.

Part Number Changes:

| Old Part # | New Part # | Description | Remarks |
|---------------|--------------|-------------|---------------|
| 123-33202-200 | 123-3317A-20 | Lock Nut | Reference #19 |



Date: December 2004

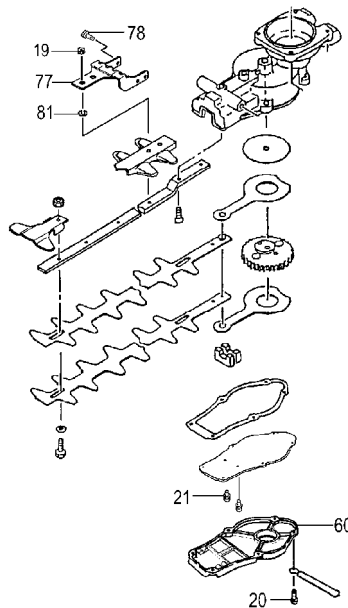
Model & Serial: THT-2120 / HTD-2526PF / HTD-2522PF

All Units

Reason: We have received field reports of hedge trimmer cutter guide bar breaking under certain conditions and have developed a solution to reduce the likelihood of this reoccurring.

Part Number Changes: THT / HTD

| Reference | New parts # | Description |
|-----------|---------------|-------------------------------|
| | 462-33191-90 | Support plate assy |
| # 20 | 994-61040-124 | * Hex hole bolt 4x12S (6 pcs) |
| # 60 | 301-33191-21 | * Gear case B |
| # 77 | 462-33191-20 | * Support plate |
| # 78 | 994-61040-104 | * Hex hole bolt 4x10S (4 pcs) |
| # 81 | 871-32600-200 | * Special washer B |



Date: December 2004

Model & Serial: **TPH-210/2501/250PF270PF – A290201 and later.**
HTD-2522PF/2526PF/2530PF, HTS-2530PF/2540PF – A302051 and later.
THT-2120/2520/2540 – A302051 and later.

Reason: Configuration standardization of hardware, converting blade hardware from US Standard thread to Metric thread.

Comments: Please verify serial number on unit prior to ordering replacement blade hardware and add the support plate on older serial numbers.

Part Number Changes:

| Description | Old parts # | New parts # | Comments |
|-------------------------------------|---------------|---------------|-----------|
| For TPH-210/2501/250PF/270PF | | | |
| Cutter guide 625.5L M6 | 122-32287-21 | 122-32286-21 | |
| Cutter fixing bolt A | 124-33202-21 | 124-32287-20 | 4 to 1 pc |
| Cutter fixing bolt B | | 125-32287-20 | 3 pcs |
| Flange nut M6 | 123-3317A-20 | 991-82060-001 | 4 pcs |
| For HTD-2522PF | | | |
| Cutter guide 625.5L M6 | 122-33160-21 | 122-33178-20 | |
| Cutter fixing bolt A | 124-33202-21 | 124-32287-20 | |
| Flange nut M6 | 123-3317A-20 | 991-82060-001 | |
| Protection plate 390L | 136-33160-20 | | |
| Washer 6 | 992-01060-011 | | 3 pcs |
| For THT-2120/HTD-2526PF | | | |
| Cutter guide 734L M6 | 122-33168-21 | 122-33248-20 | |
| Cutter fixing bolt A | 124-33202-21 | 124-32287-20 | |
| Flange nut M6 | 123-3317A-20 | 991-82060-001 | |
| Protection plate 390L | 136-33160-20 | | |
| Washer 6 | 992-01060-011 | | 3 pcs |
| For HTS-2530PF | | | |
| Cutter guide 830L M6 | 122-33187-20 | 122-33285-20 | |
| Cutter fixing bolt A | 124-33202-21 | 124-32287-20 | |
| Flange nut M6 | 123-3317A-20 | 991-82060-001 | |
| Protection plate 585L | 136-33181-20 | | |
| Washer 6 | 992-01060-011 | 3 to 1 pc | |
| For THT-2520/HTD-2530PF | | | |
| Cutter guide 845.5L M6 | 122-33190-21 | 122-33191-20 | |
| Cutter fixing bolt A | 124-33202-21 | 124-32287-20 | |
| Flange nut M6 | 123-3317A-20 | 991-82060-001 | |
| protection plate 380L | 136-33190-20 | | |
| Washer 6 | 992-01060-011 | | 2 pcs |
| For THT-2540/HTS-2540PF | | | |
| Cutter guide 1105L M6 | 122-33185-20 | | |
| Cutter fixing bolt A | 124-33202-21 | 124-32287-20 | |
| Flange nut M6 | 123-3317A-20 | 991-82060-001 | |
| Protection plate 585L | 136-33181-20 | | |
| Washer 6 | 992-01060-011 | 3 to 1 pc | |